

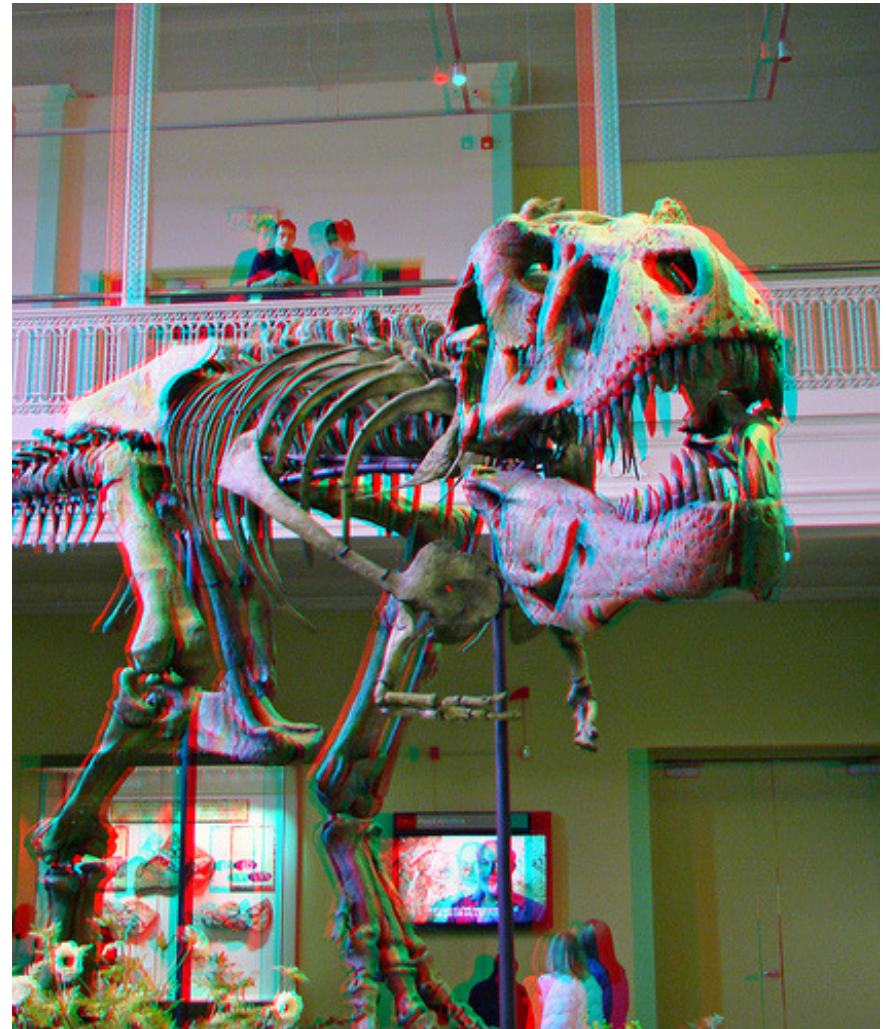
3D TV

Our eyes see things in 3D because we have two eyes seeing everything from two angles.

So to make a 3D image, we need to send different images to each eye. How can we do that?

One way is to make one image in one color (red) and the other in a different color (cyan). If I look at this image with a red and a cyan filter, what will I see?

Will it work if I turn the glasses upside down?



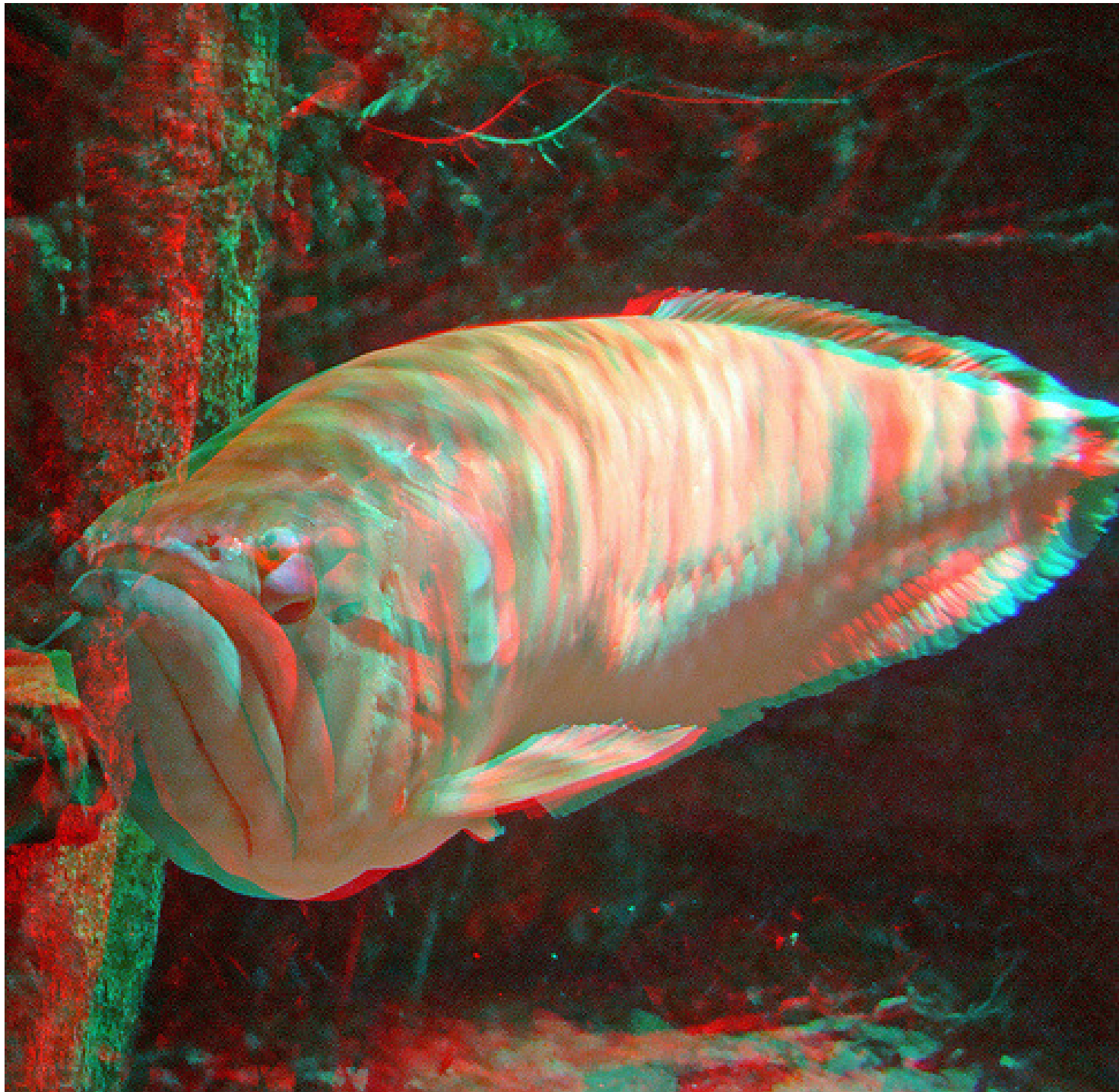
Photos by Ian Straffin



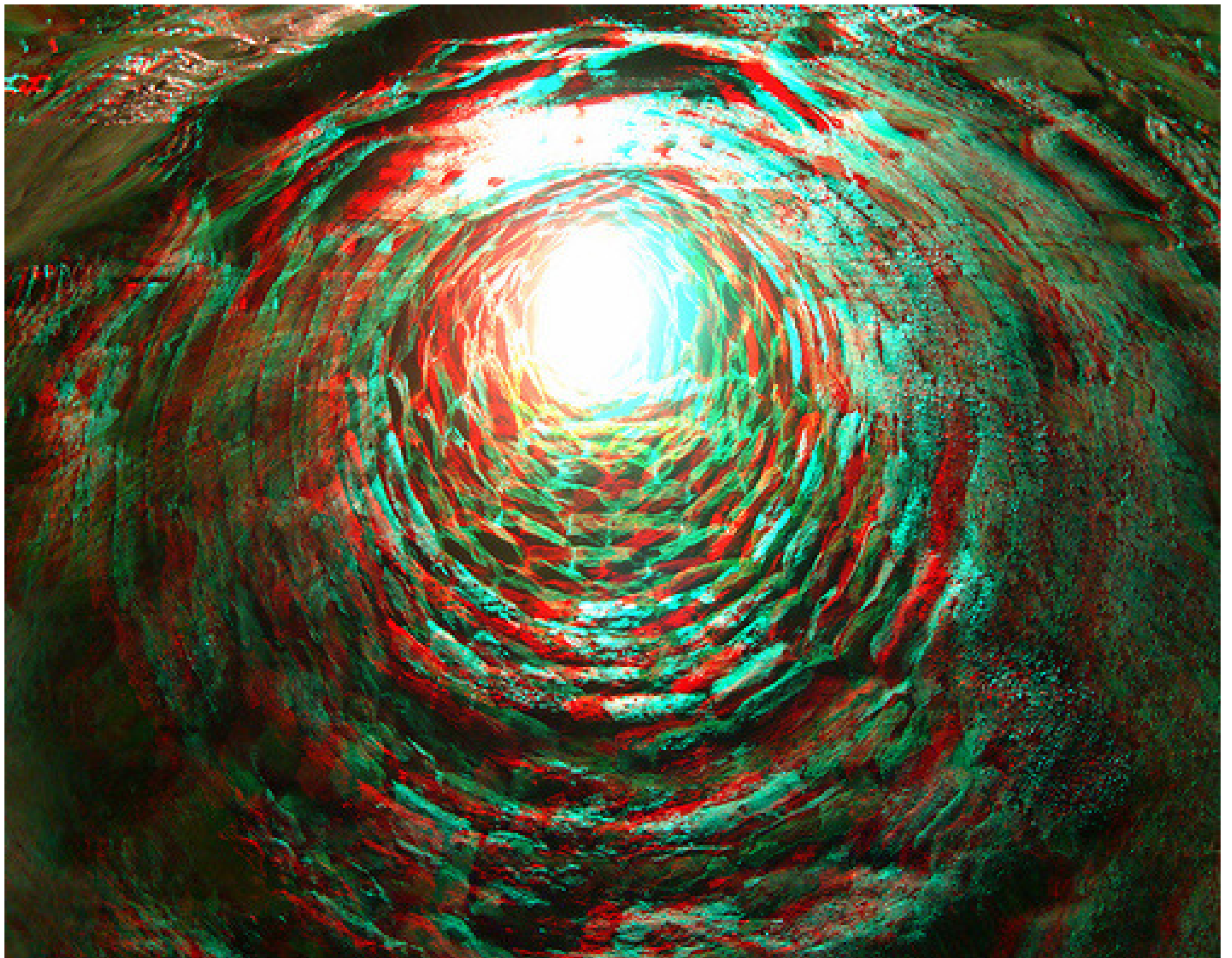
Photograph by Laura Waller



Photograph by Ian Straffin



Photographs by Ian Straffin



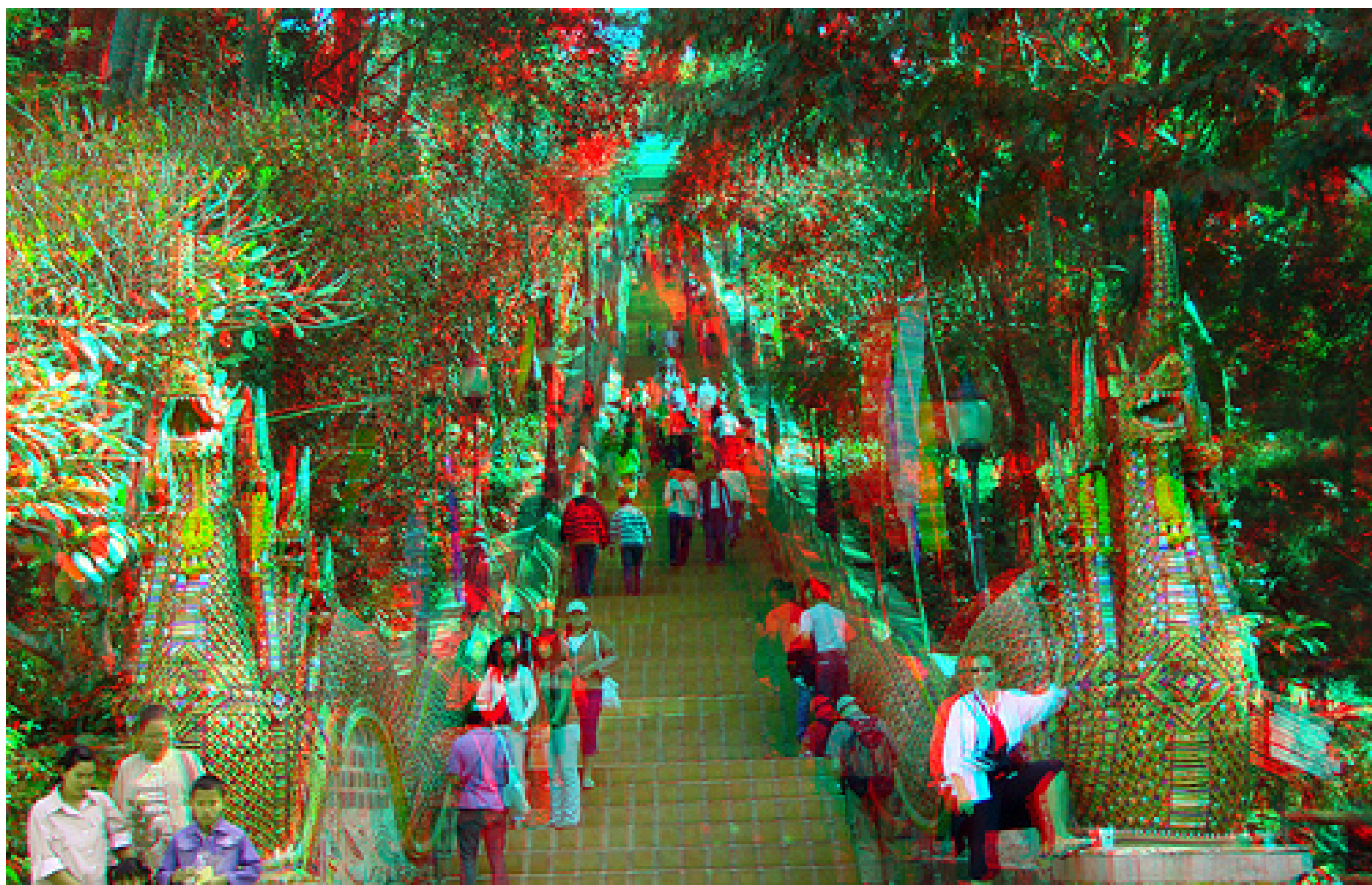
Photographs by Ian Straffin



Photographs by Ian Straffin

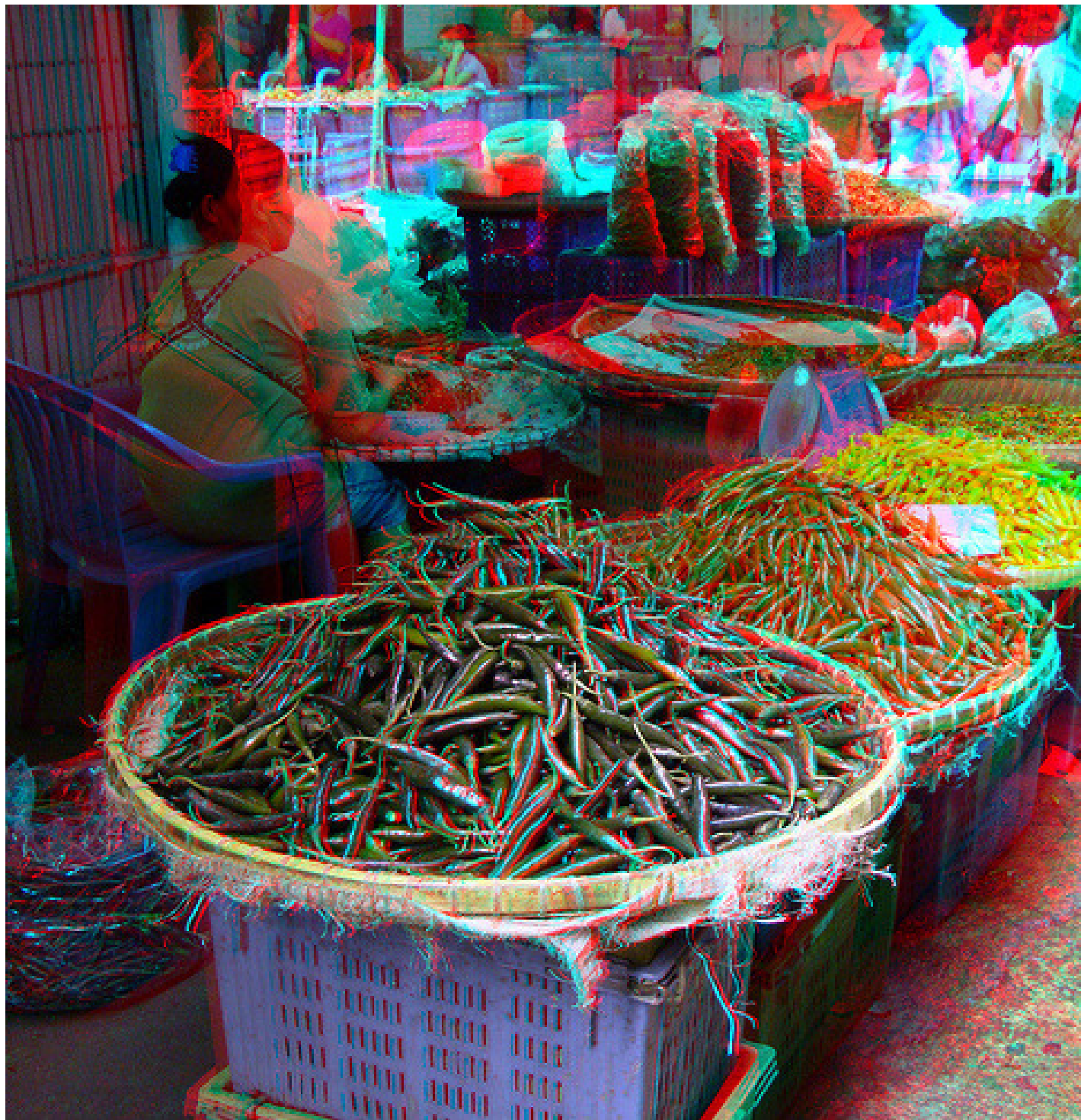


Photos by Ian Straffin

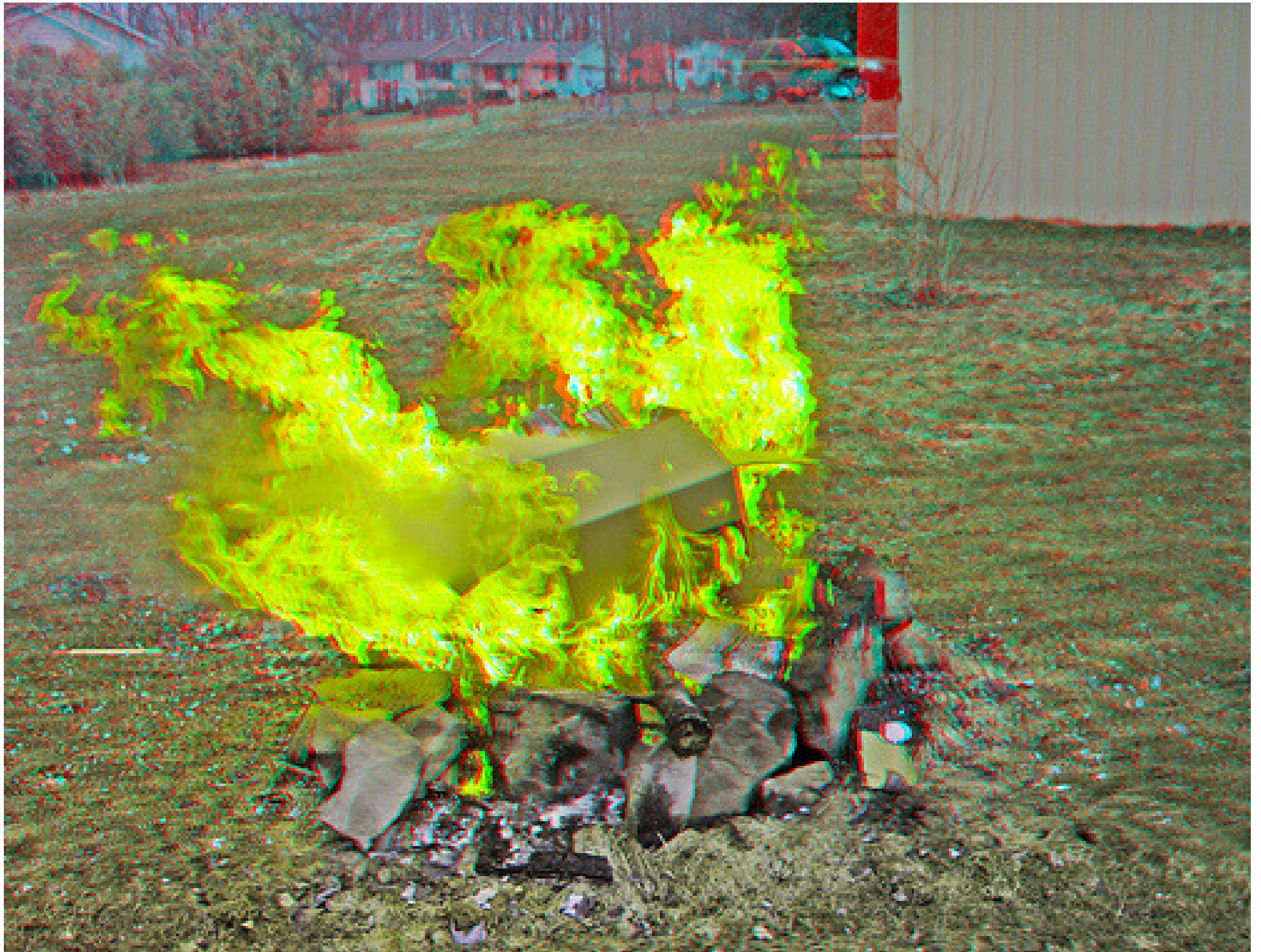




Photos by Ian Straffin



Photos by Ian Straffin



Photos by Ian Straffin

3D webcam

Novo Minoru demo

